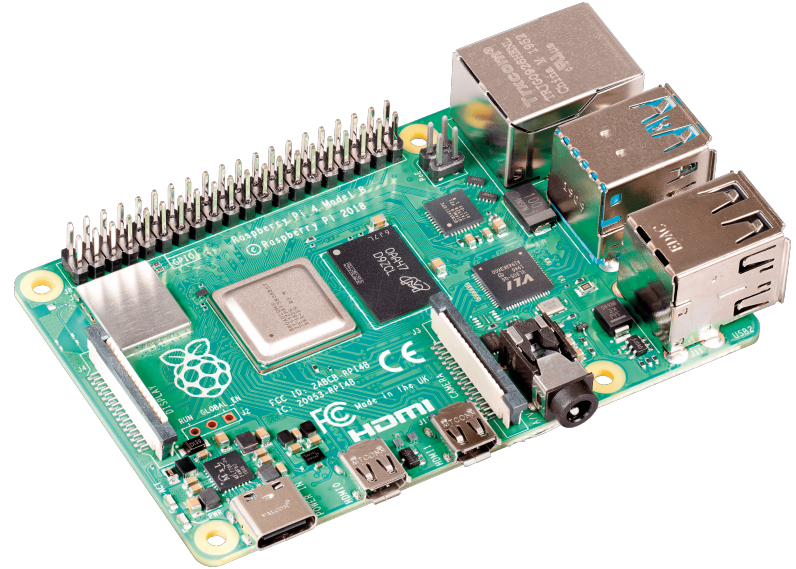


Part 1

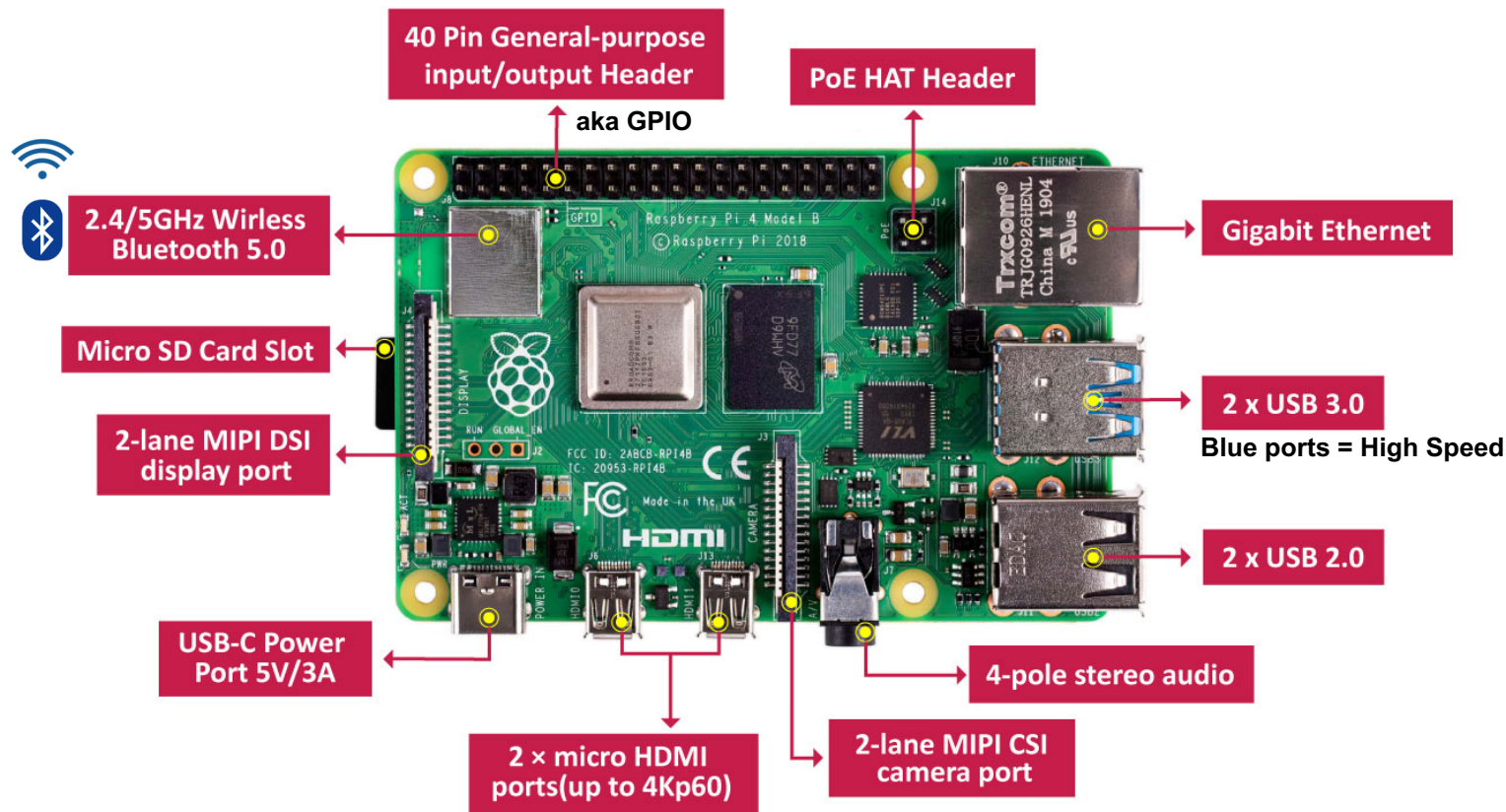
Intro to Pi Model 4B

Adapted with permission from Raspberry Pi Picademy

What is a Raspberry Pi?

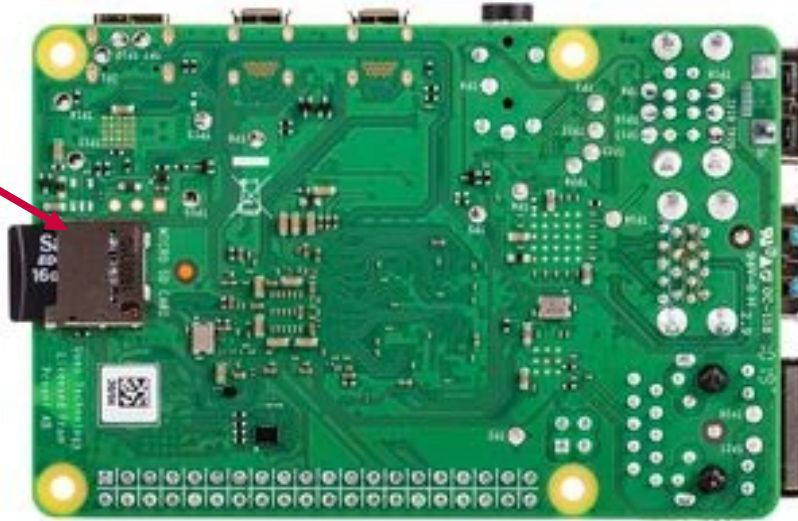


Let's explore the board of the Pi 4 Model B: Top View



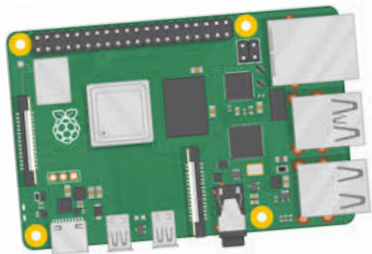
Let's explore the board of the Pi 4 Model B: Bottom View

Micro SD Card Slot



Basic Setup:

Raspberry Pi 4



Micro SD Card

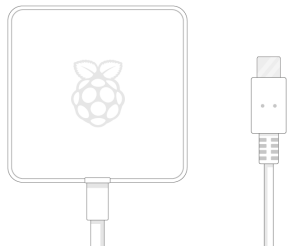


Class 10
Minimum 8GB
Recommended – 16GB

Monitor w/ HDMI input



USB-C Power Supply



Minimum 5V/3.0A

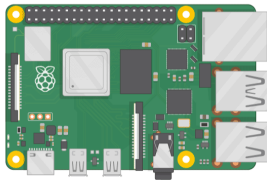
HDMI Cable



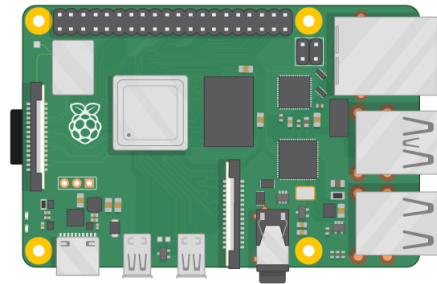
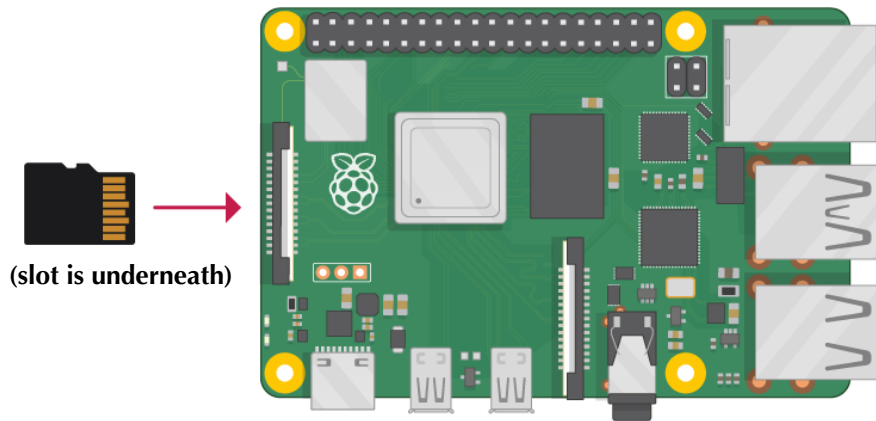
USB Keyboard & Mouse



Connecting everything:



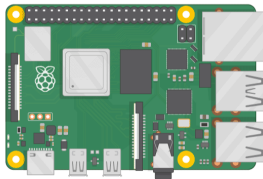
1. Insert micro SD card



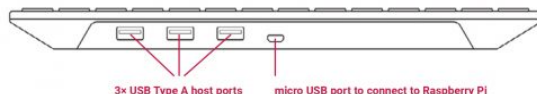
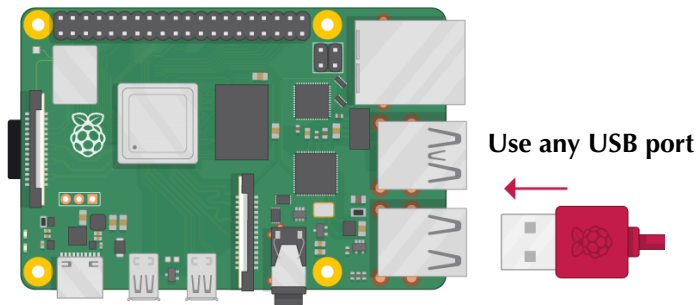
SD Card will stick out a little.
This is ok, do not panic.



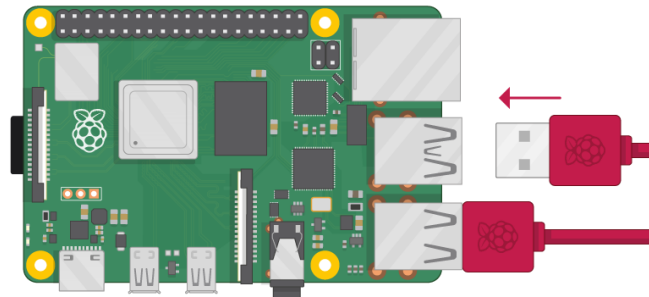
Connecting everything:



1. Insert micro SD card
2. Connect keyboard & mouse



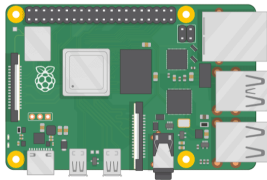
3× USB Type A host ports micro USB port to connect to Raspberry Pi



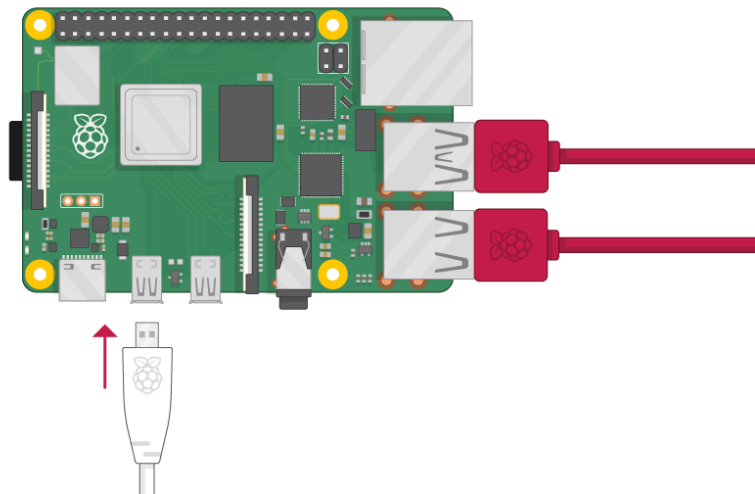
*if using the official Pi keyboard and mouse, you may connect the mouse to any of the 3 USB ports on the back of the keyboard.



Connecting everything:



1. Insert micro SD card
2. Connect keyboard & mouse
3. **Connect micro HDMI**



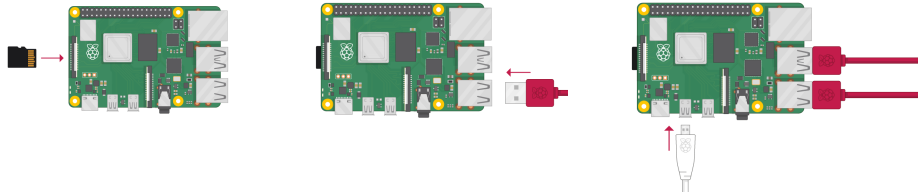
Connect the standard HDMI end of the cable to the HDMI port on your external monitor



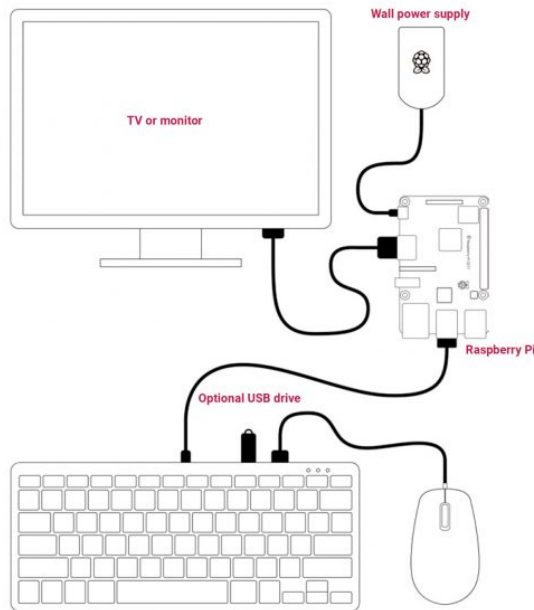
STOP: Double check all of your connections before connection power



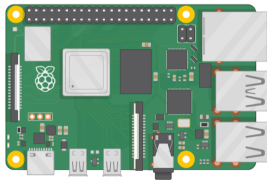
1. Insert micro SD card
2. Connect keyboard & mouse
3. **Connect micro HDMI**



Your connections should be similar to this picture. Do not connect the power supply yet.

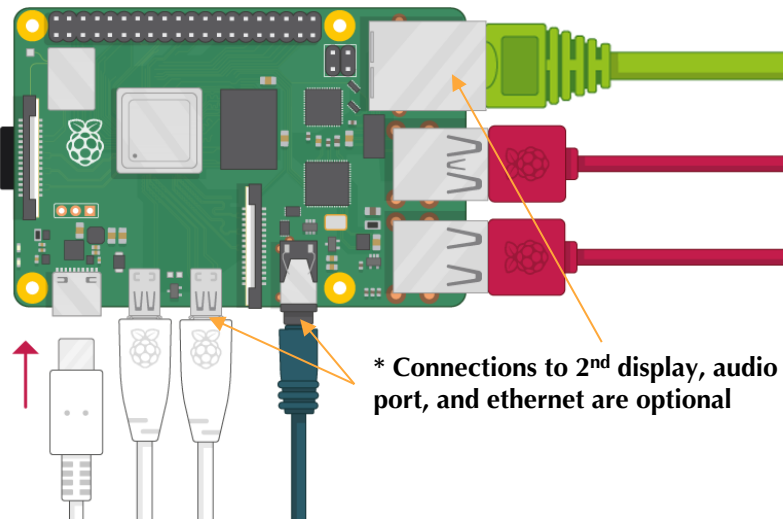


Booting up your Pi:



1. Insert micro SD card
2. Connect keyboard & mouse
3. Connect micro HDMI

4. **Connect power supply**



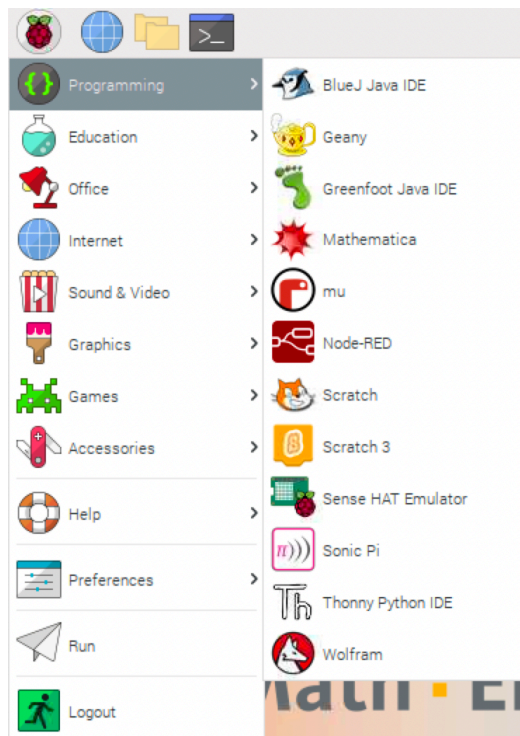
Home Screen

Your screen size might be different depending on the resolution of your monitor.

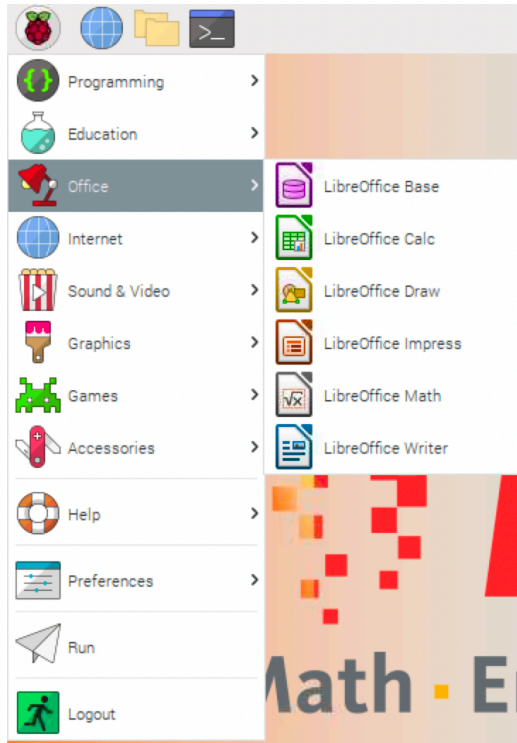


What's a Pi good for?

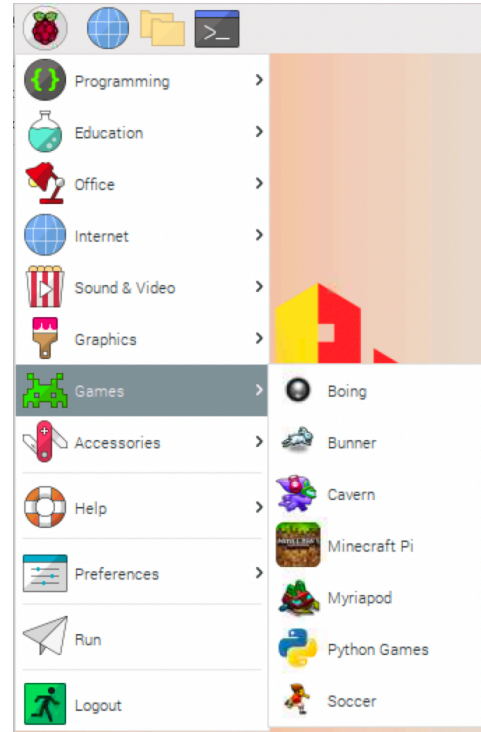
Coding



Office Suite

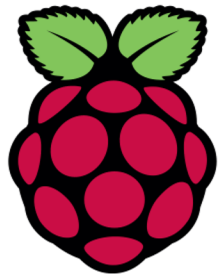


Games



AND SO MUCH MORE!!!





END

PART 1